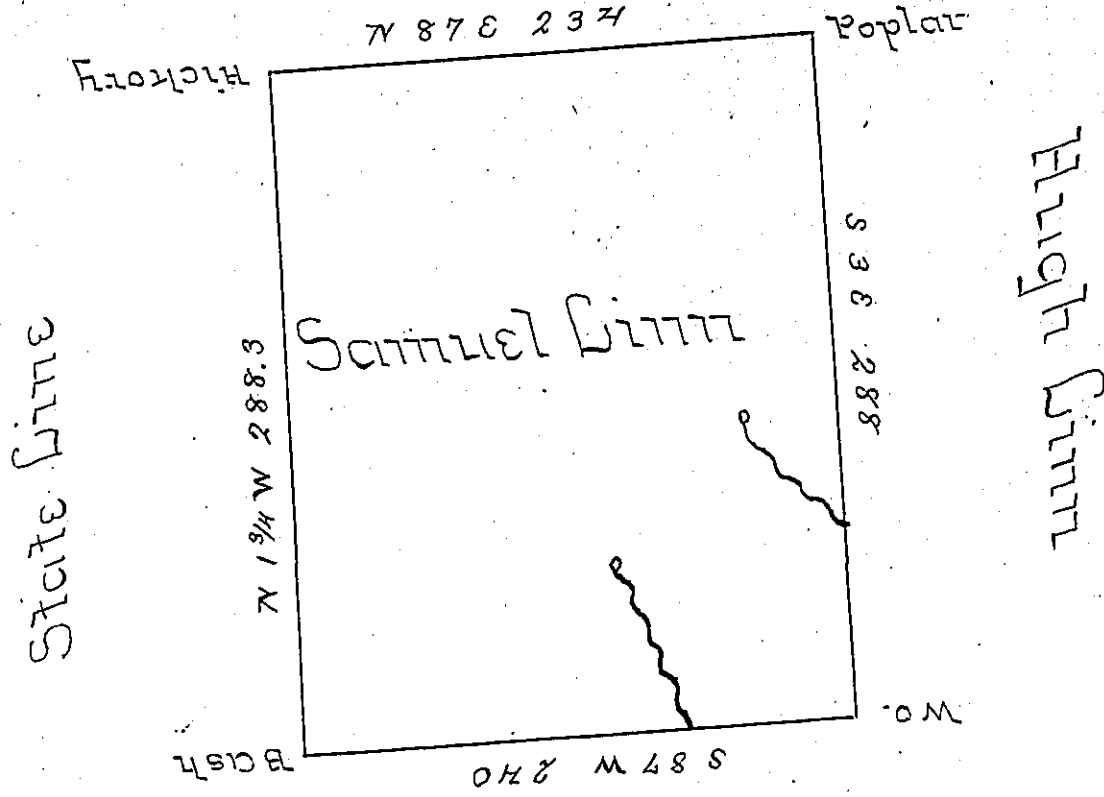


John Linn



Hugh Linn

Situate on the Waters of big Beaver Creek in dis-
 trict No 3 Allegany County containing four hun-
 dred and two Acres, one hundred perches and the
 Allowance Surveyed 4 June 1796 - in pursuance
 of a Warrant granted Samuel Linn 21 April 1794

Ben Stokesly D.S.

Wm. Brodhead Esq. Sg.

IN TESTIMONY that the above is a copy of the original remaining on file in
 the Department of Internal Affairs of Pennsylvania, made
 conformably to an Act of Assembly approved the 16th day of
 February, 1833, I have hereunto set my Hand and caused
 the Seal of said Department to be affixed at Harrisburg,
 this twentieth day of October 1905.

James D. Brown
 Secretary of Internal Affairs.